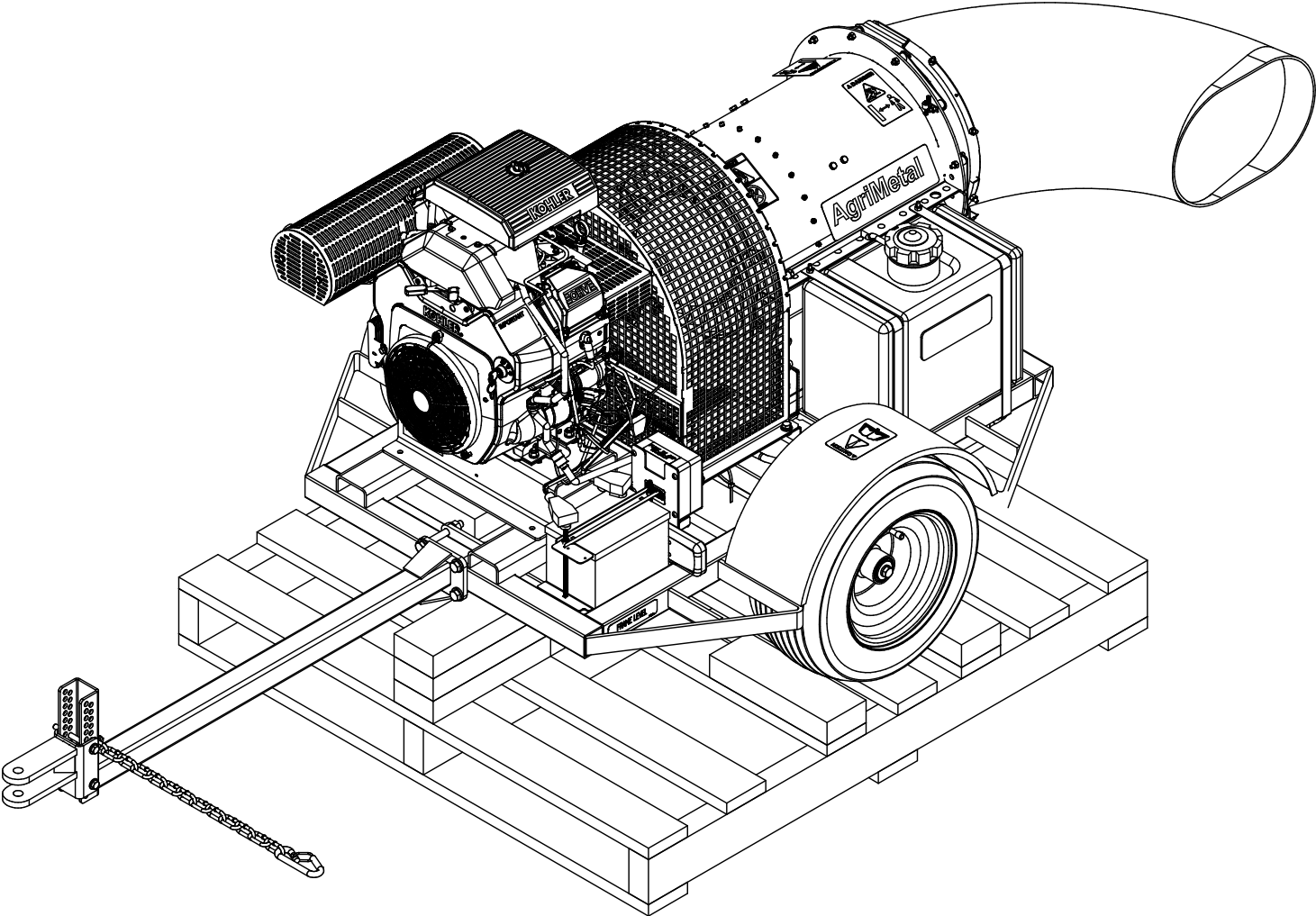
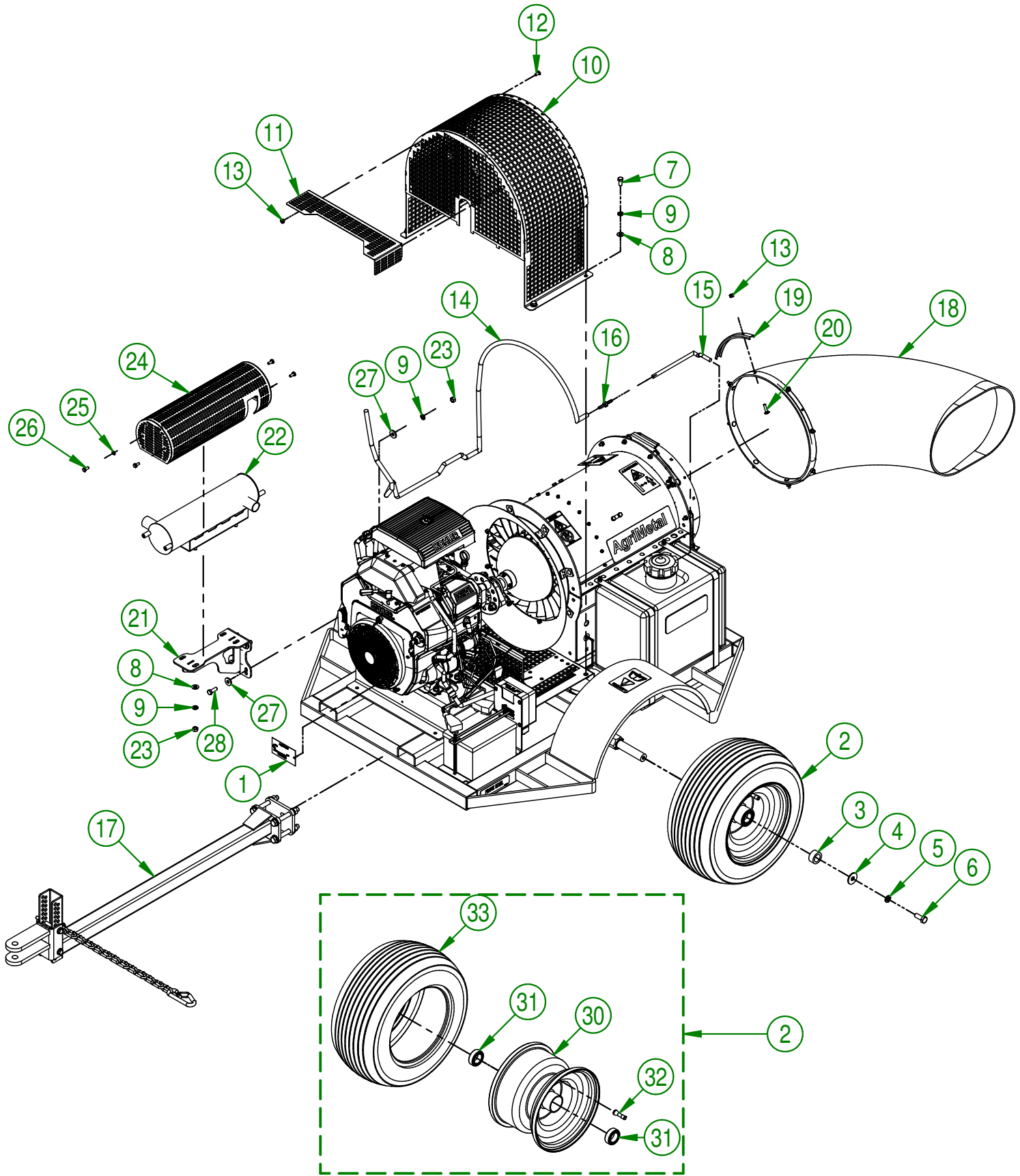


AgriMetal

PARTS LIST



TURBINE BLOWER 270



AGRIMETAL	
TURBINE BLOWER 270	
CREATION : 02/11/17	ASSEMBLY : 33-99-2501
REVISION : 24/09/19	AUTHOR : J.KABWE

33-99-2501

#	PART #	Qty	TITLE
1	25-55-0710	1	SERIAL NUMBER PLATE
2	NC14-70-0317	2	ASSEMBLY WHEEL 18X9.50-8 WITH BALL BEARING
3	33-21-0065	2	WHEEL BUSHING
4	01-01-1660	2	WASHER SPACER
5	NC02-32-0014	2	LOCK WASHER ZINC 1/2"
6	NC01-17-0248	2	HEX. BOLT GR2 ZINC 1/2-13 X 1 1/4"
7	NC01-17-0112	4	HEX. BOLT GR2 ZINC 3/8-16 X 3/4"
8	01-01-2485	8	FLAT WASHER 14 GA X 13/16"OD X 25/64" ID
9	NC02-32-0012	12	LOCK WASHER ZINC 3/8"
10	33-50-0035	1	EXHAUST (TB-270)
11	33-01-0025	1	EXHAUST TUBE GUARD
12	NC01-04-0001	5	CARR. BOLT GR2 ZINC 1/4-20 X 1/2"
13	NC01-96-0009	13	NYLON-INSERT LOCKNUT ZINC 1/4-20
14	33-46-0543	1	GAS HOSE EPA 1/2" DIA.X 1/4" D.I. X 71"
15	33-46-0533	1	GAS HOSE 1/2" DIA.X 1/4" D.I. X 10"
16	NC13-65-0065	1	BARBILLON HOSE
17	33-55-0040	1	HITCH ASSEMBLY
18	33-42-0005	1	90° PLASTIC ELBOW
19	33-01-2480	4	DUCT CLAMP
20	NC01-04-0005	8	CARR. BOLT GR2 ZINC 1/4-20 X 1"
21	22-50-0300	1	MUFFLER SUPPORT (KOHLER 27 HP)
22	33-50-1050	1	27 HP KOHLER MUFFLER
23	NC02-07-0018	8	HEX. NUT ZINC 3/8-16
24	33-50-1055	1	MUFFLER GUARD (27 HP KOHLER)
25	NC02-32-0010	4	LOCK WASHER ZINC 1/4"
26	NC01-29-0003	4	HEX. BOLT GR5 ZINC 1/4-28 X 5/8"
27	21-01-0950	8	FLAT WASHER 10GA 1.005" DIA X 25/64"
28	NC01-17-0114	4	HEX. BOLT GR2 ZINC 3/8-16 X 1"
29		1	

NC14-70-0317

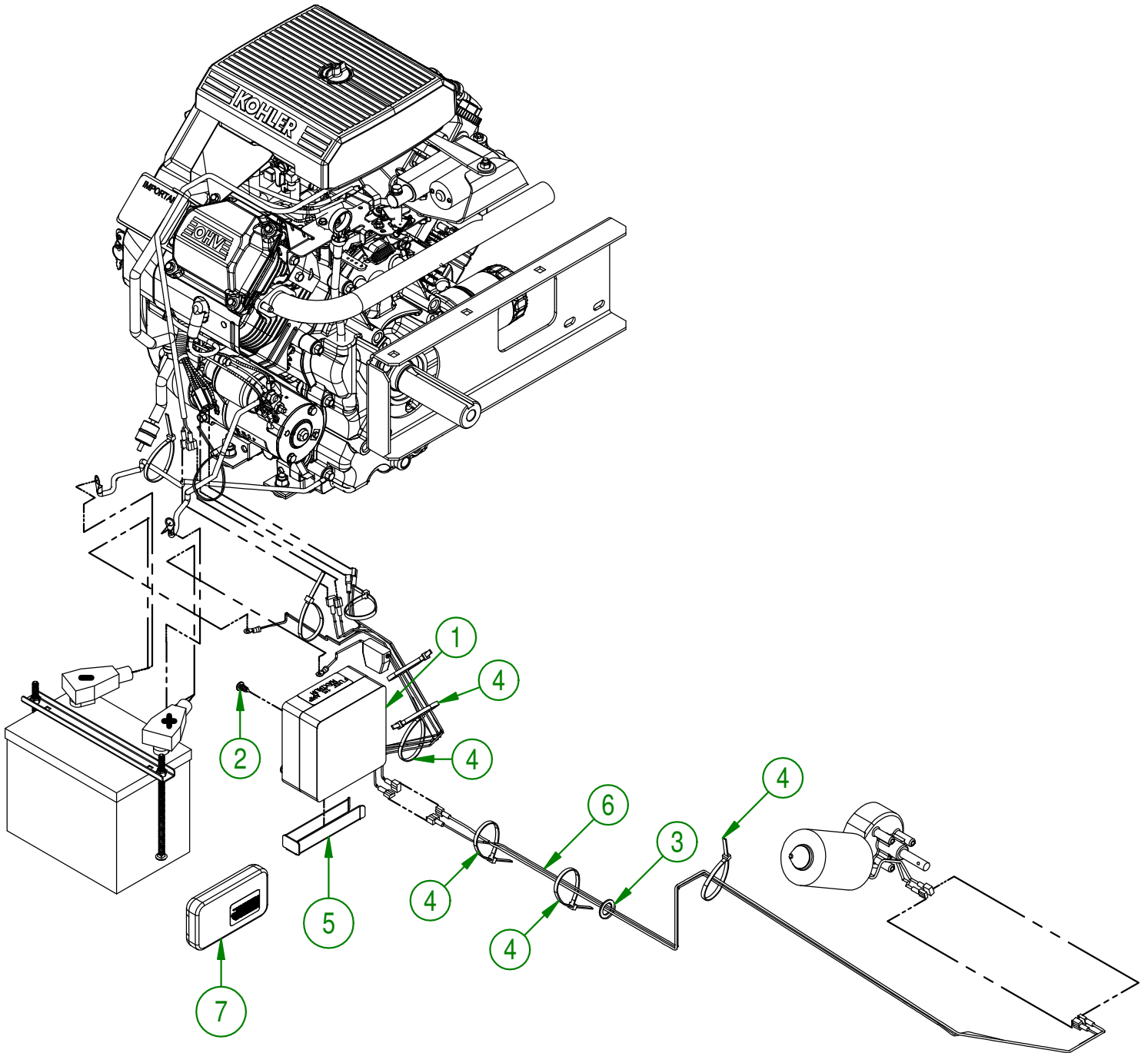
#	PART #	Qty	TITLE
30	NC14-70-0320	1	RIM FOR NC14-70-0317
31	NC14-70-0321	2	BEARING FOR NC14-70-0317
32	NC14-70-0322	1	VALVE FOR NC14-70-0317
33	NC14-70-0319	1	WHEEL 18X9.50-8 (TURBINE)

AGRIMETAL**TURBINE BLOWER 270**

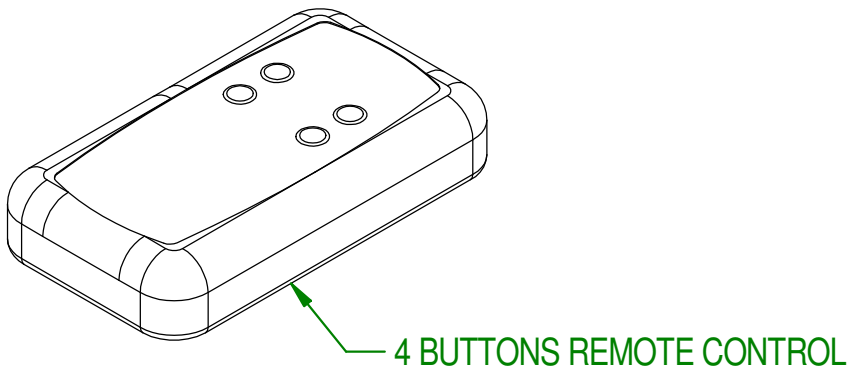
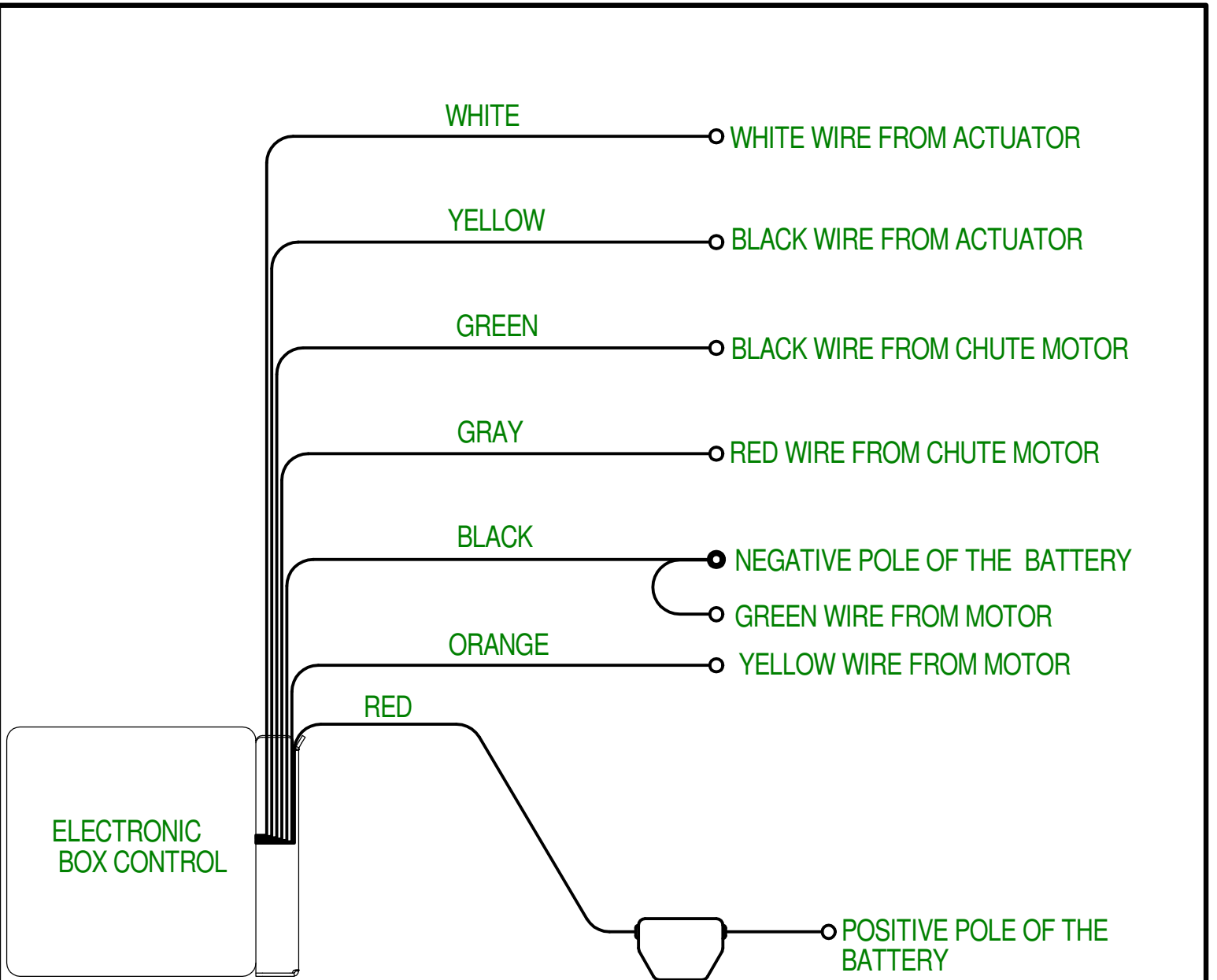
CREATION : 02/11/17
REVISION : 24/09/19

ASSEMBLY : **33-99-2501**
AUTHOR : J.KABWE

#	PART #	Qty	TITLE
1	NCI3-25-0369	1	ELECTRIC BOX TB 270
2	NC02-42-0096	4	PHILLIPS SCREW ZINC #14 X 5/8"
3	NCI3-15-0055	1	INSULATING ROLLED COLLAR 7/16"ID X 15/16"OD X 5/16"T
4	NCI3-25-0019	10	BLACK TIE RAP
5	33-22-2240	1	WIRE PROTECTOR
6	NCI3-25-0374	1	WIRE 46"(NEW BOX)
7	33-57-0076	1	REMOTE CONTROL GROUP.

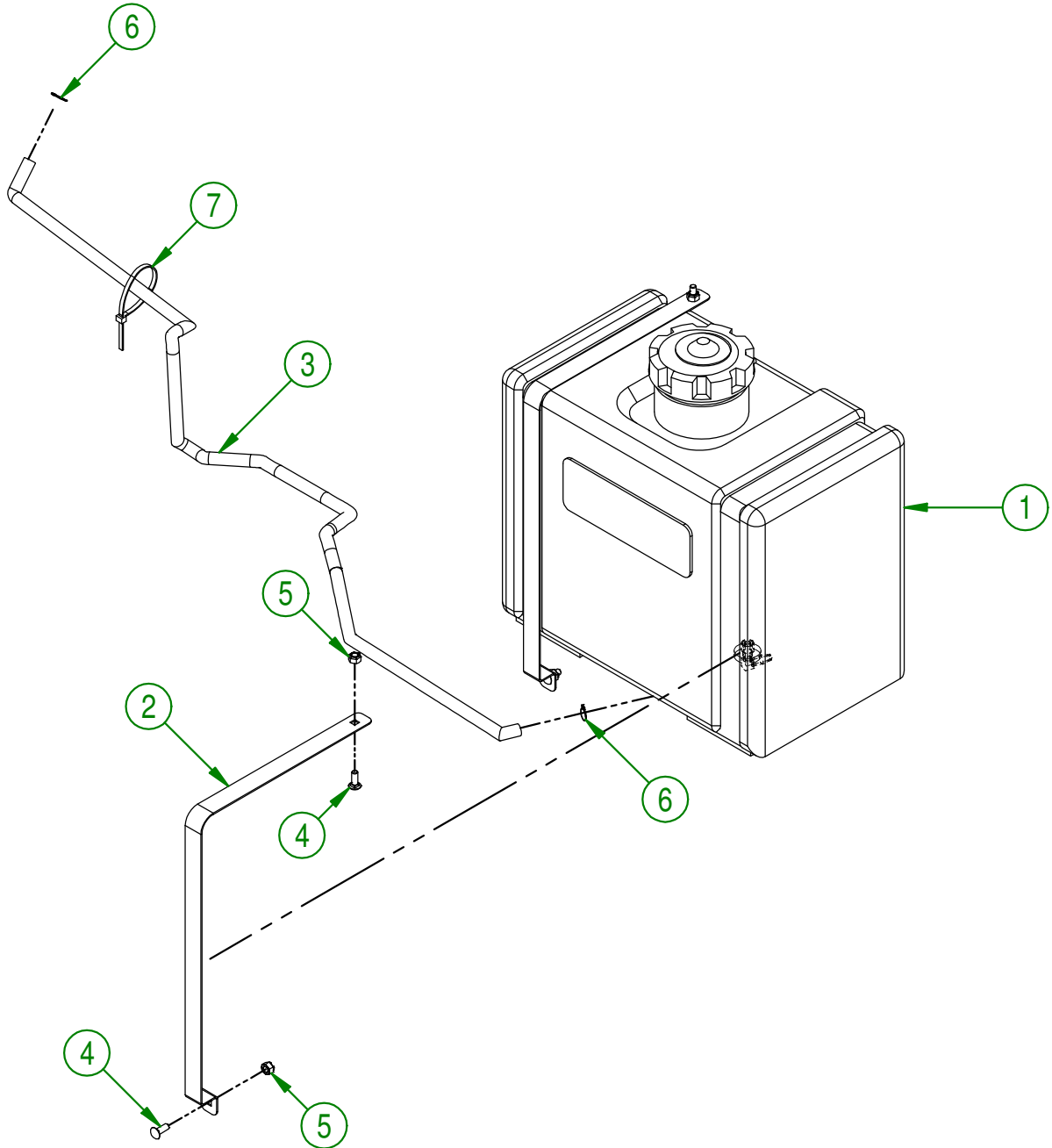


AGRIMETAL	
TURBINE BLOWER 270	
CREATION : 06/11/17	ASSEMBLY : 33-99-2501
REVISION : 12/10/18	AUTHOR : J.KABWE Page 3 de 18



AGRIMETAL	
ELECTRONIC BOX CONTROL GROUP.	
CREATION : 08/11/17	ASSEMBLY : 33-57-0006
REVISION : 05/10/18	AUTHOR : J.KABWE Page 4 de 18

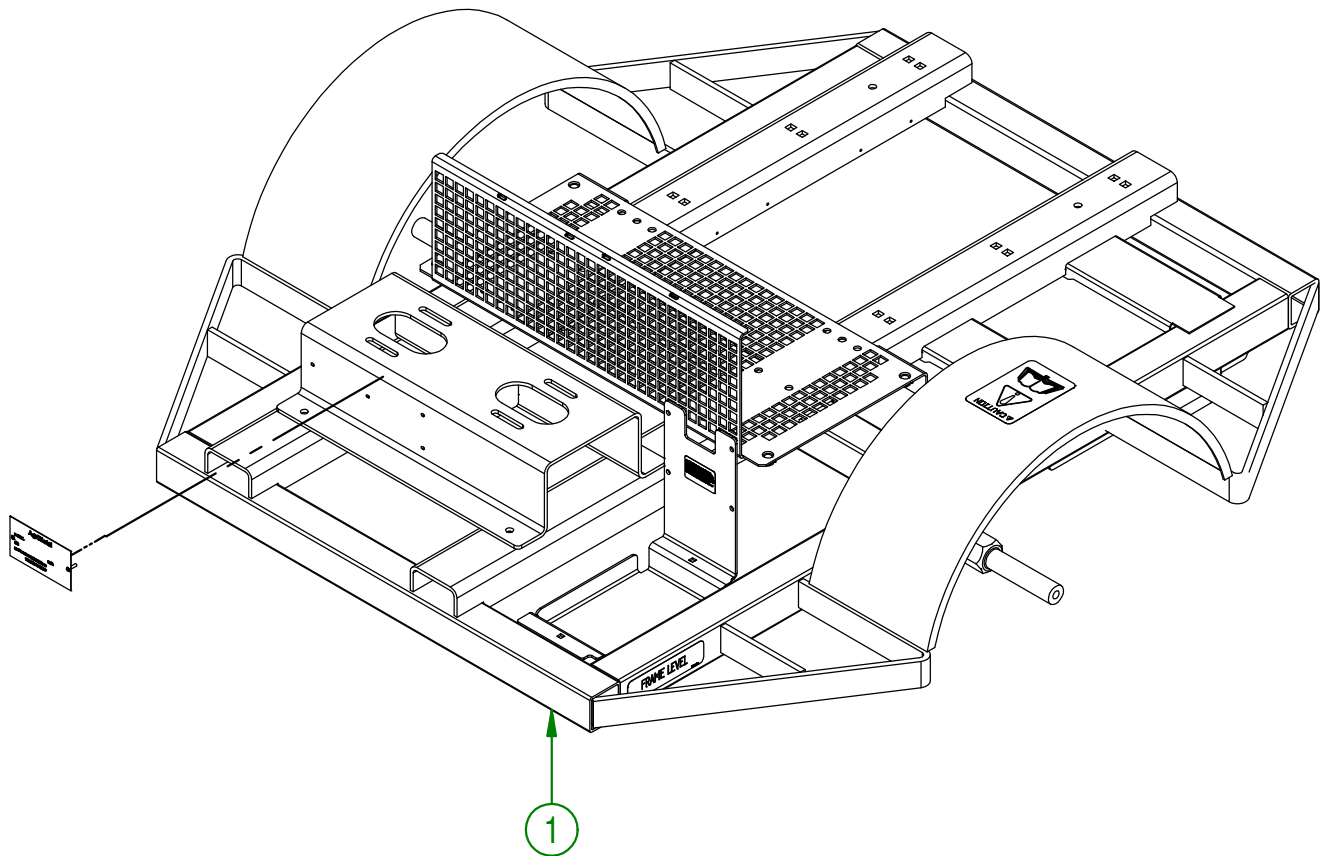
#	PART #	Qty	TITLE
1	NCI3-80-0248	1	GAS TANK
2	33-01-3045	2	GAS TANK STRAP
3	33-46-0532	1	GAS HOSE 1/2" DIA.X 1/4" D.I. X 37"
4	NC01-04-0002	4	CARR. BOLT GR2 ZINC 1/4-20 X 5/8"
5	NC01-96-0009	4	NYLON-INSERT LOCKNUT ZINC 1/4-20
6	NC01-65-0201	2	SPRING -GRIP HOSE CLAMPS 1/2" O.D
7	NCI3-25-0019	1	BLACK TIE RAP



AGRIMETAL	
GAS TANK ASSEMBLY	
CREATION : 02/11/17	ASSEMBLY : 33-57-0130
REVISION : 10/10/18	AUTHOR : J.KABWE Page 5 de 18

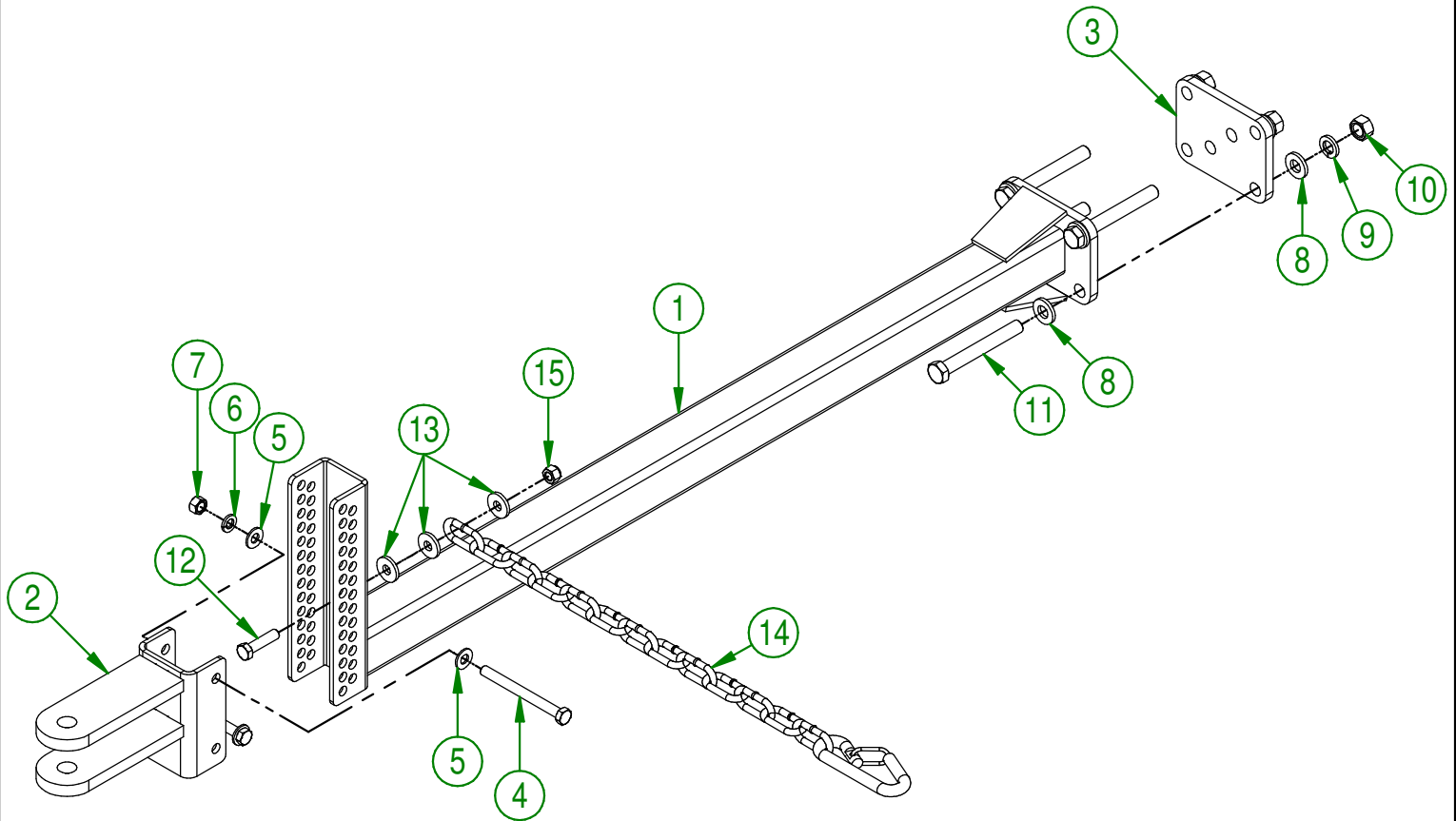
33-57-2501

#	PART #	Qty	TITLE
1	33-50-2501	1	FRAME TB 270



AGRIMETAL	
ASSEMBLY FRAME STICKER INCLUDED	
CREATION : 14/11/17	ASSEMBLY : 33-57-2501
REVISION : 05/10/18	AUTHOR : J.KABWE Page 6 de 18

#	PART #	Qty	TITLE
1	33-50-0010	1	DRAW BAR
2	33-50-0055	1	WELD ASSEMBLY HAND
3	33-04-0605	1	HITCH PLATE
4	NC01-25-0126	2	HEX. BOLT GR5 ZINC 3/8-16 X 4"
5	01-01-2485	4	FLAT WASHER 14 GA X 13/16"OD X 25/64" ID
6	NC02-32-0012	2	LOCK WASHER ZINC 3/8"
7	NC02-07-0018	2	HEX. NUT ZINC 3/8-16
8	01-01-0925	8	WASHER
9	NC02-32-0014	4	LOCK WASHER ZINC 1/2"
10	NC02-07-0020	4	HEX. NUT ZINC 1/2-13
11	NC01-17-0259	4	HEX. BOLT GR2 ZINC 1/2-13 X 4"
12	NC01-17-0116	1	HEX. BOLT GR2 ZINC 3/8-16 X 1 1/2"
13	21-01-0950	3	FLAT WASHER 10GA 1.005" DIA X 25/64"
14	55-41-0000	1	SAFETY CHAIN
15	NC01-96-0011	1	NYLON NUT 3/8-16

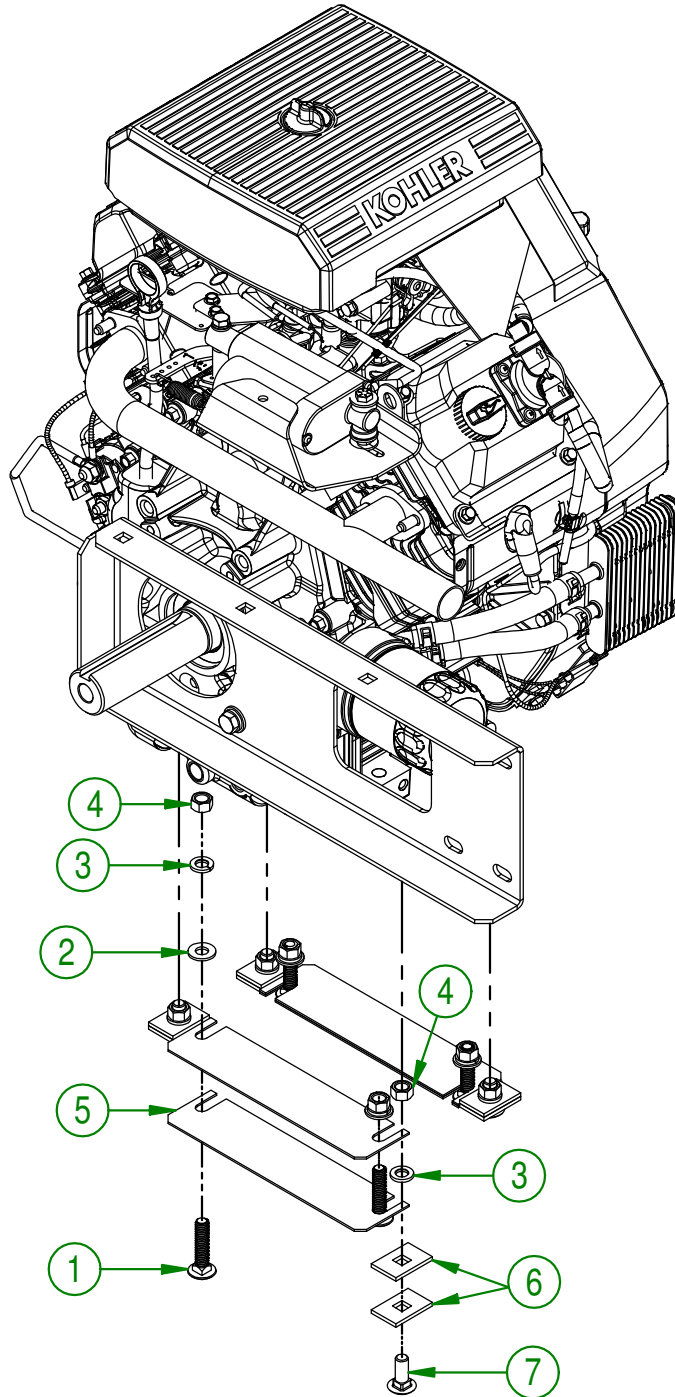


AGRIMETAL
HITCH ASSEMBLY

CREATION : 27/10/17
 REVISION : 13/09/21

ASSEMBLY : **33-55-0040**
 AUTHOR : J.KABWE

#	PART #	Qty	TITLE
1	NC01-02-0112	4	CARR. BOLT GR2 FLZ 3/8-16 X 1 3/4"
2	01-01-2485	4	FLAT WASHER 14 GA X 13/16"OD X 25/64" ID
3	NC02-32-0012	8	LOCK WASHER ZINC 3/8"
4	NC02-07-0018	8	HEX. NUT ZINC 3/8-16
5	33-22-2215	4	ENGINE SHIM ALU. 0.016" X 8.125" X 2"
6	33-22-5600	8	ENGINE STOPPER
7	NC01-04-0109	4	CARR. BOLT GR2 ZINC 3/8-16 X 1"

**AGRIMETAL****27 HP ENGINE GROUP.**

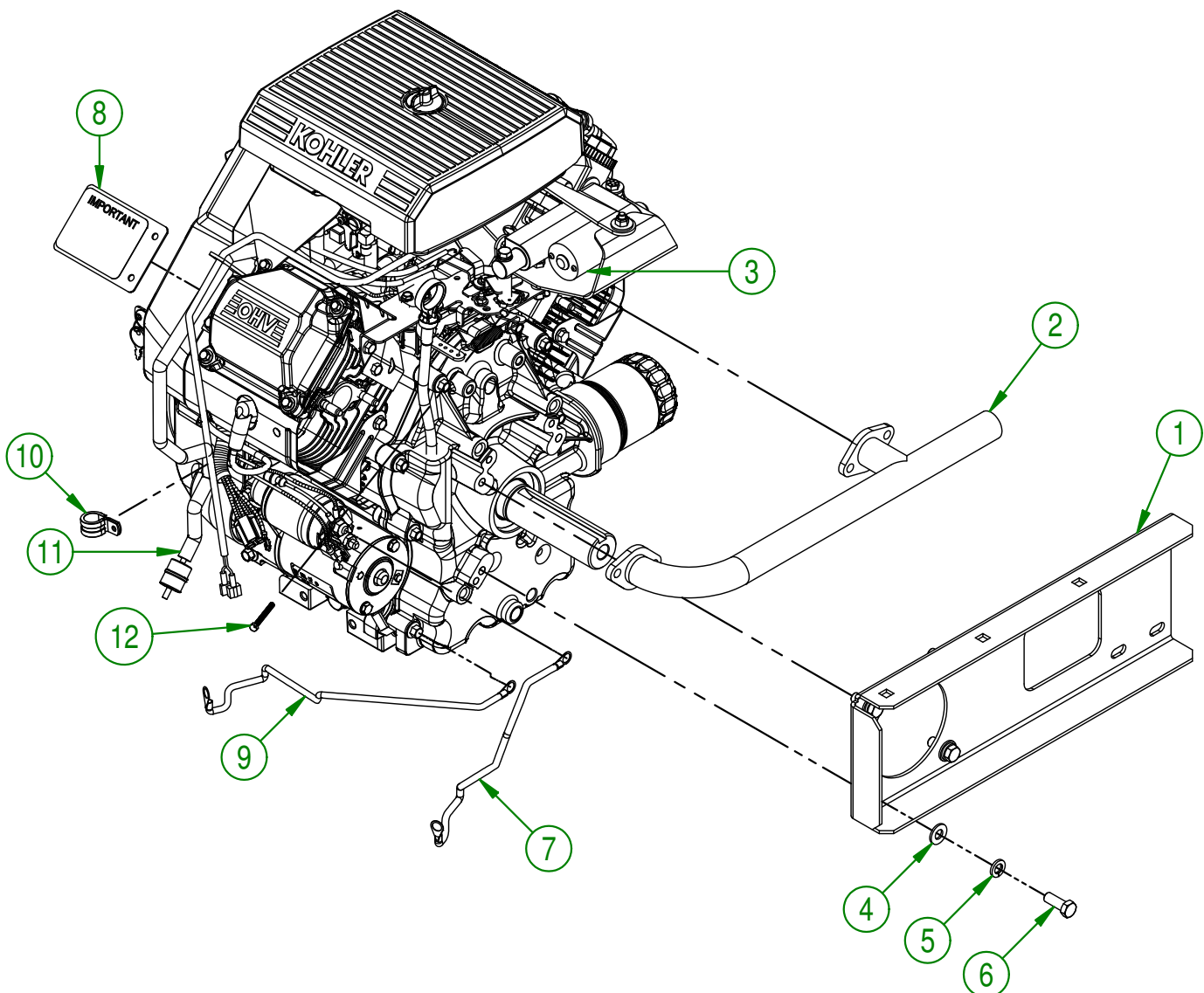
CREATION : 01/11/17
 REVISION : 12/10/18

ASSEMBLY : **33-57-2541**

AUTHOR : J.KABWE

Page 8 de 18

#	PART #	Qty	TITLE
1	33-01-0900	1	MOFFLER SUPPORT
2	33-35-5000	1	EXHAUST MANIFOLD
3	33-55-0107	1	ASSEMBLY ACTUATOR 12 VOLTS
4	01-01-2485	4	FLAT WASHER 14 GA X 13/16"OD X 25/64" ID
5	NC02-32-0012	4	LOCK WASHER ZINC 3/8"
6	NC01-17-0114	4	HEX. BOLT GR2 ZINC 3/8-16 X 1"
7	33-55-1505	1	ASSEMBLY BATTERY RED CABLE #4
8	33-55-0090	1	ENGINE PLATE ASSY.
9	33-55-2500	1	ASSEMBLY BATTERY BLACK CABLE #4
10	NCI3-25-0110	1	SNUG-FIT DAMPING LOOP CLAMP
11	33-46-0527	1	GAS HOSE 16"
12	NC01-45-0062	1	METR. BOLT GR 8.8 4MM X0.70P X 40MM



AGRIMETAL

27 HP KOHLER ENGINE STARTER ASSY.

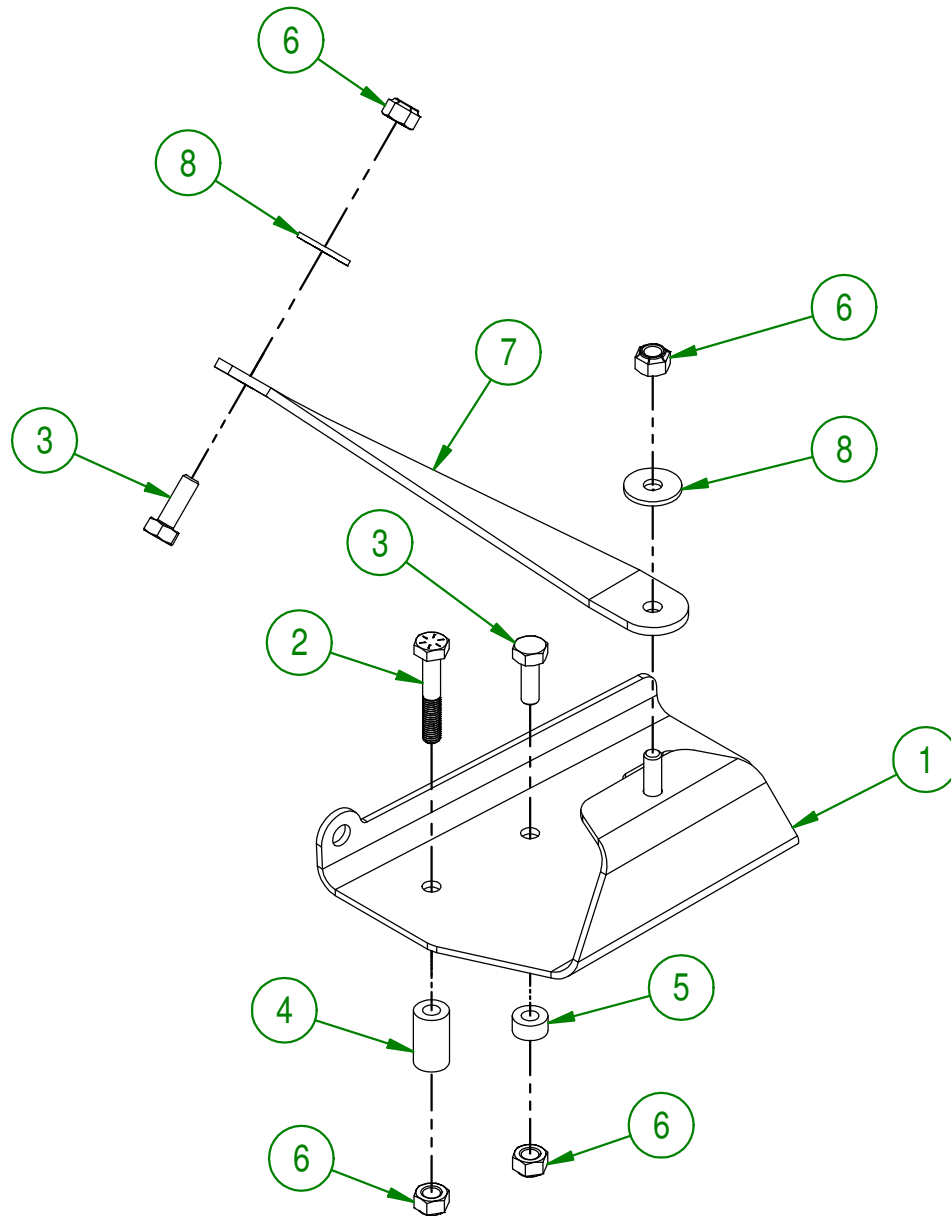
CREATION : 01/11/17
REVISION : 29/08/19

ASSEMBLY : **33-55-2531**

AUTHOR : J.KABWE

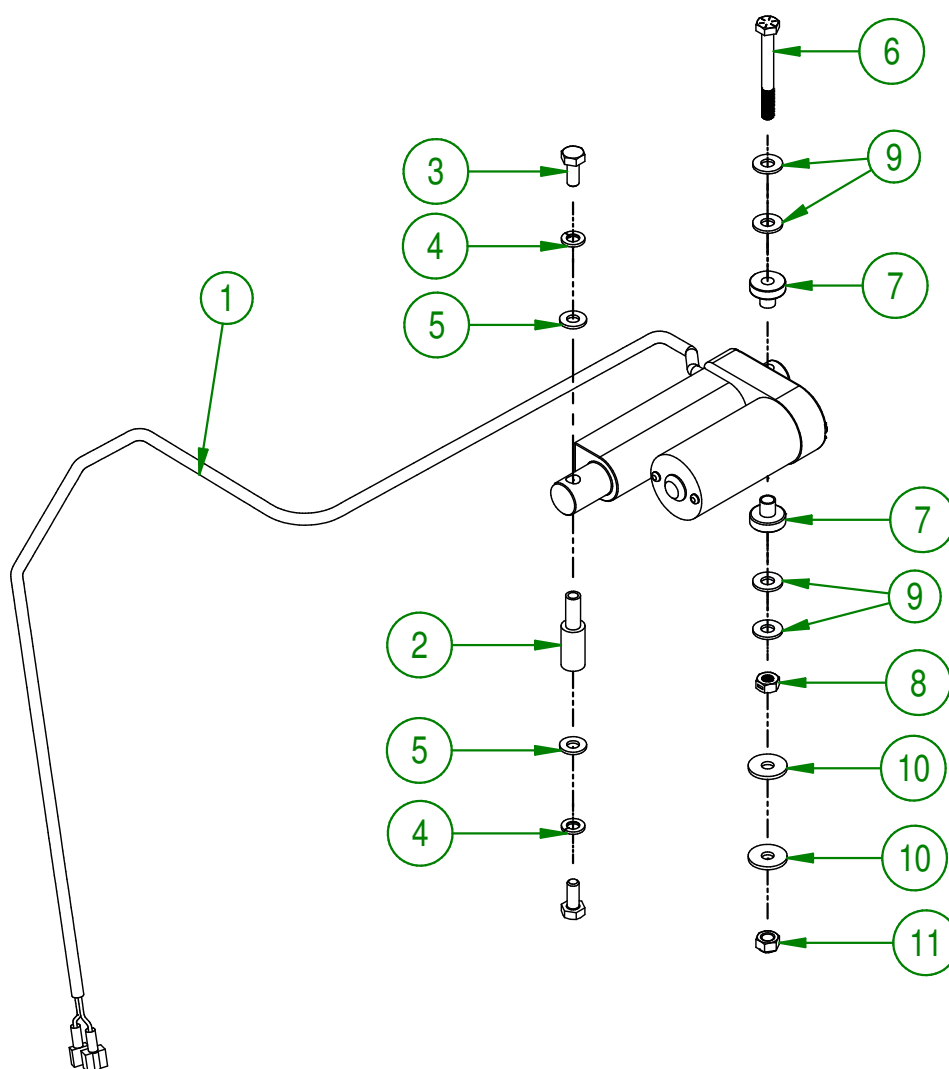
Page 9 de 18

#	PART #	Qty	TITLE
1	33-01-0040	1	ACTUATOR SUPPORT
2	NC01-37-0008	1	HEX. BOLT GR8 1/4-28 X 1 1/2"
3	NC01-37-0004	3	HEX. BOLT GR2 ZINC 1/4-28 X 3/4"
4	33-21-0070	1	ACTUATOR SUPPORT BUSHING
5	33-21-0075	1	ACTUATOR SUPPORT BUSHING
6	NC01-97-0004	4	NYLON-INSERT LOCKNUT ZINC 1/4-28
7	33-01-0045	1	ACTUATOR REINFORCING SUPPORT
8	36-01-2430	2	WASHER



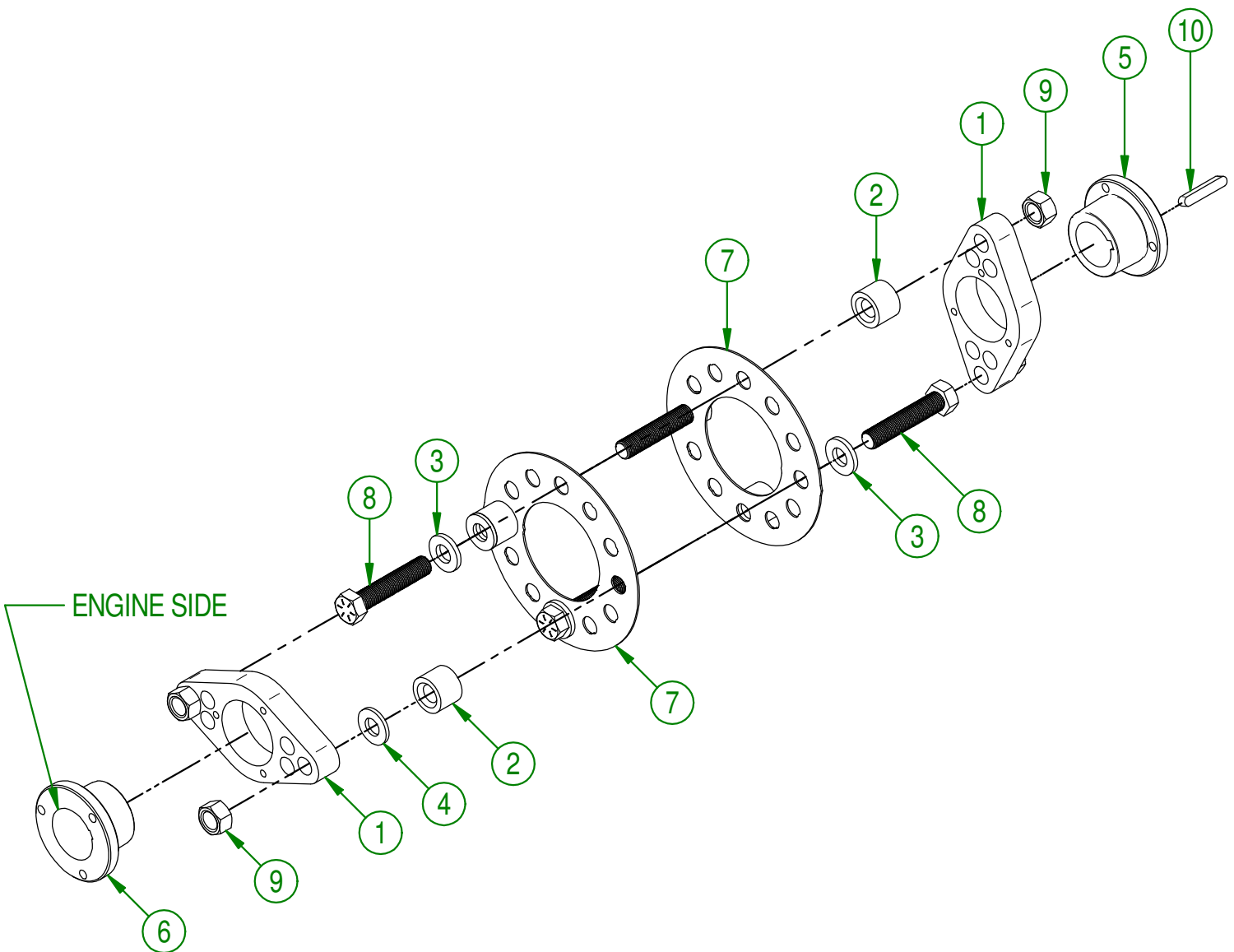
AGRIMETAL	
ACTUATOR SUPPORT GROUP.	
CREATION : 17/04/18	ASSEMBLY : 33-57-0104
REVISION : 17/04/18	AUTHOR : J.KABWE Page 10 de 18

#	PART #	Qty	TITLE
1	33-55-0100	1	ACTUATOR 12 VOLTS
2	33-13-0610	1	ACTUATOR ROD
3	NC01-37-0003	2	HEX. BOLT GR8 1/4-28 X 5/8"
4	NC02-32-0010	2	LOCK WASHER ZINC 1/4"
5	NC02-22-0007	2	WASHER 1/4" DIA. X 6/16" OD
6	NC01-37-0011	1	HEX. BOLT GR8 1/4-28 X 2 1/4"
7	33-42-0120	2	PIVOT BUSHING
8	NC02-14-1200	1	TWO WAY LOCK NUT 1/4-28
9	NC02-25-0007	4	WASHER ZINC 0.281 = 9/32
10	36-01-2430	2	WASHER
11	NC01-97-0004	1	NYLON-INSERT LOCKNUT ZINC 1/4-28



AGRIMETAL	
ASSEMBLY ACTUATOR 12 VOLTS	
CREATION : 17/04/18	ASSEMBLY : 33-55-0107
REVISION : 28/05/21	AUTHOR : J.KABWE

#	PART #	Qty	TITLE
1	33-04-1600	2	FLANGE
2	33-21-0055	4	SLEEVE
3	01-01-0925	4	WASHER
4	33-01-7570	2	WASHER
5	NC14-62-0016	1	QD BUSHING SH I 1/4"
6	NC14-62-0211	1	QD BUSHING SH I 7/16"
7	33-20-0152	2	SPACER
8	NC01-37-0253	4	HEX. BOLT GR8 ZINC 1/2-20 X 2 1/2"
9	NC01-94-0013	4	NYLON NUT ZINC 1/2-20"
10	NC01-65-0087	1	KEY 1/4 X 1/4 X 1 1/2"

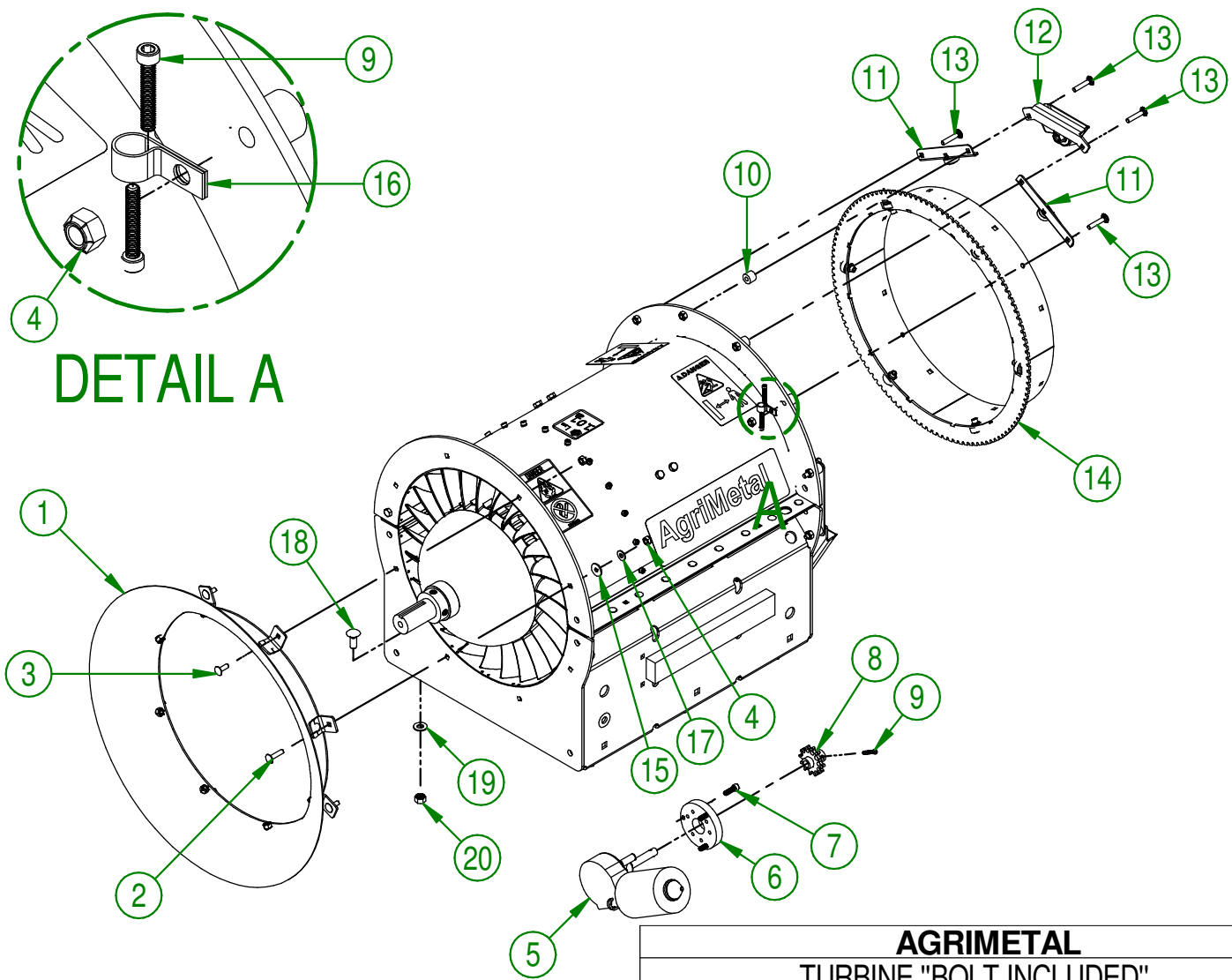


AGRIMETAL
COUPLING ASSEMBLY

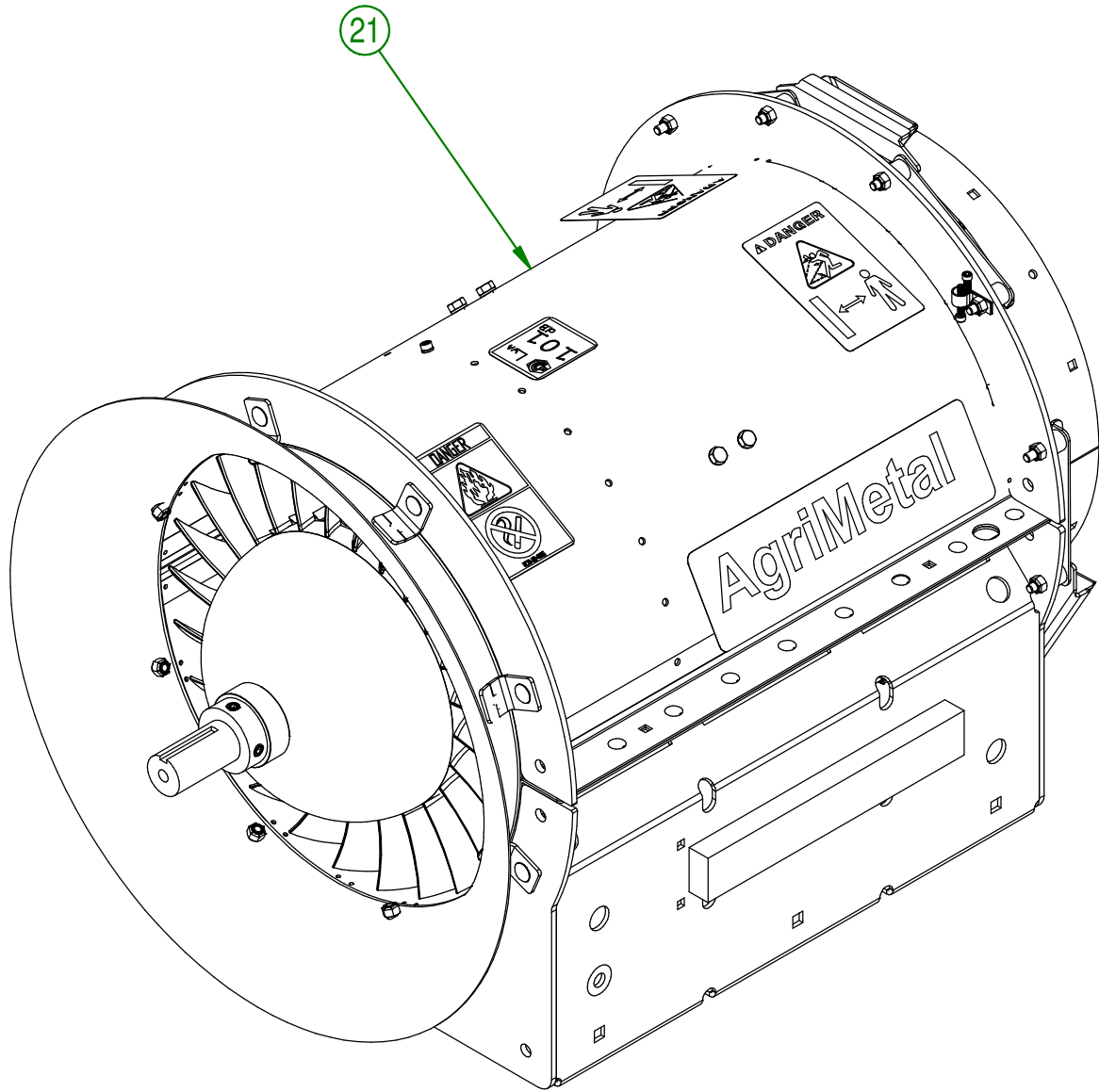
CREATION : 03/11/17
 REVISION : 05/10/18

ASSEMBLY : **33-57-0046**
 AUTHOR : J.KABWE Page 12 de 18

#	PART #	Qty	TITLE
1	33-55-0085	1	AIR INTAKE ASSY.
2	NC01-04-0005	2	CARR. BOLT GR2 ZINC 1/4-20 X 1"
3	NC01-04-0003	6	CARR. BOLT GR2 ZINC 1/4-20 X 3/4"
4	NC01-96-0009	21	NYLON-INSERT LOCKNUT ZINC 1/4-20
5	33-35-0005	1	OUTLET MOTOR
6	33-21-0100	1	ENGINE CONVERSION PLATE
7	NC02-50-1072	3	SOCKET CAP SCREW M6 X 20mm
8	33-55-0035	1	GEARED CROWN SPROCKET
9	NC02-50-0069	3	SOCKET CAP SCREW T.RON 8-32 X 1"
10	33-21-0080	12	SPACER
11	33-55-0060	6	BEARING GUIDE ASSY.
12	33-55-0555	3	BEARING HOLDER
13	NC01-04-0006	12	CARR. BOLT GR2 ZINC 1/4-20 X 1 1/4"
14	33-55-0065	1	OUTLET SPROCKET
15	36-01-2430	3	WASHER
16	NC13-25-0233	1	VINYLE PROTECTOR COLLAR
17	NC02-25-0007	2	WASHER ZINC 0.281 = 9/32
18	NC01-04-0109	6	CARR. BOLT GR2 ZINC 3/8-16 X 1"
19	01-01-2485	6	FLAT WASHER 14 GA X 13/16"OD X 25/64" ID
20	NC01-93-0011	6	LOCK NUT 3/8-16
21	33-57-0020	1	TURBINE KIT (NEW)

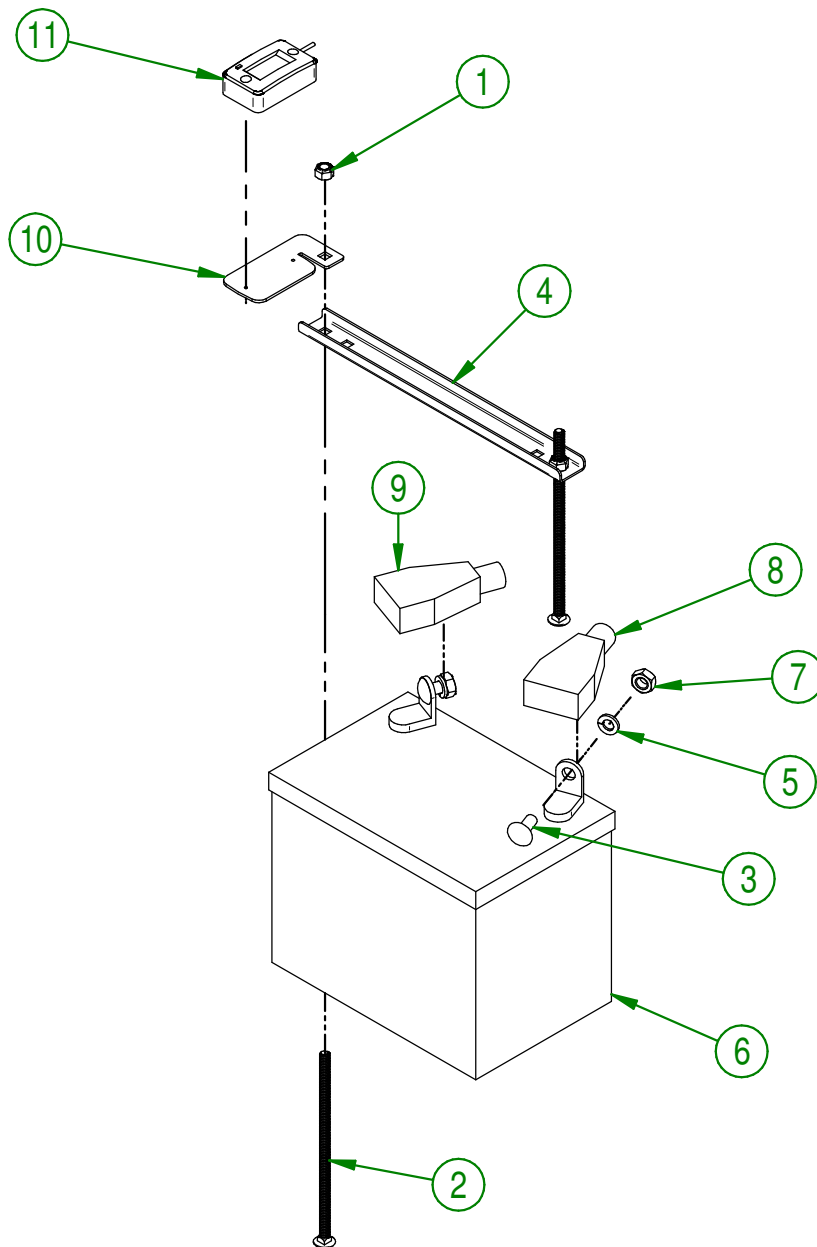


AGRIMETAL	
TURBINE "BOLT INCLUDED"	
CREATION : 11/10/18	ASSEMBLY : 33-57-0080
REVISION : 13/09/21	AUTHOR : J.KABWE



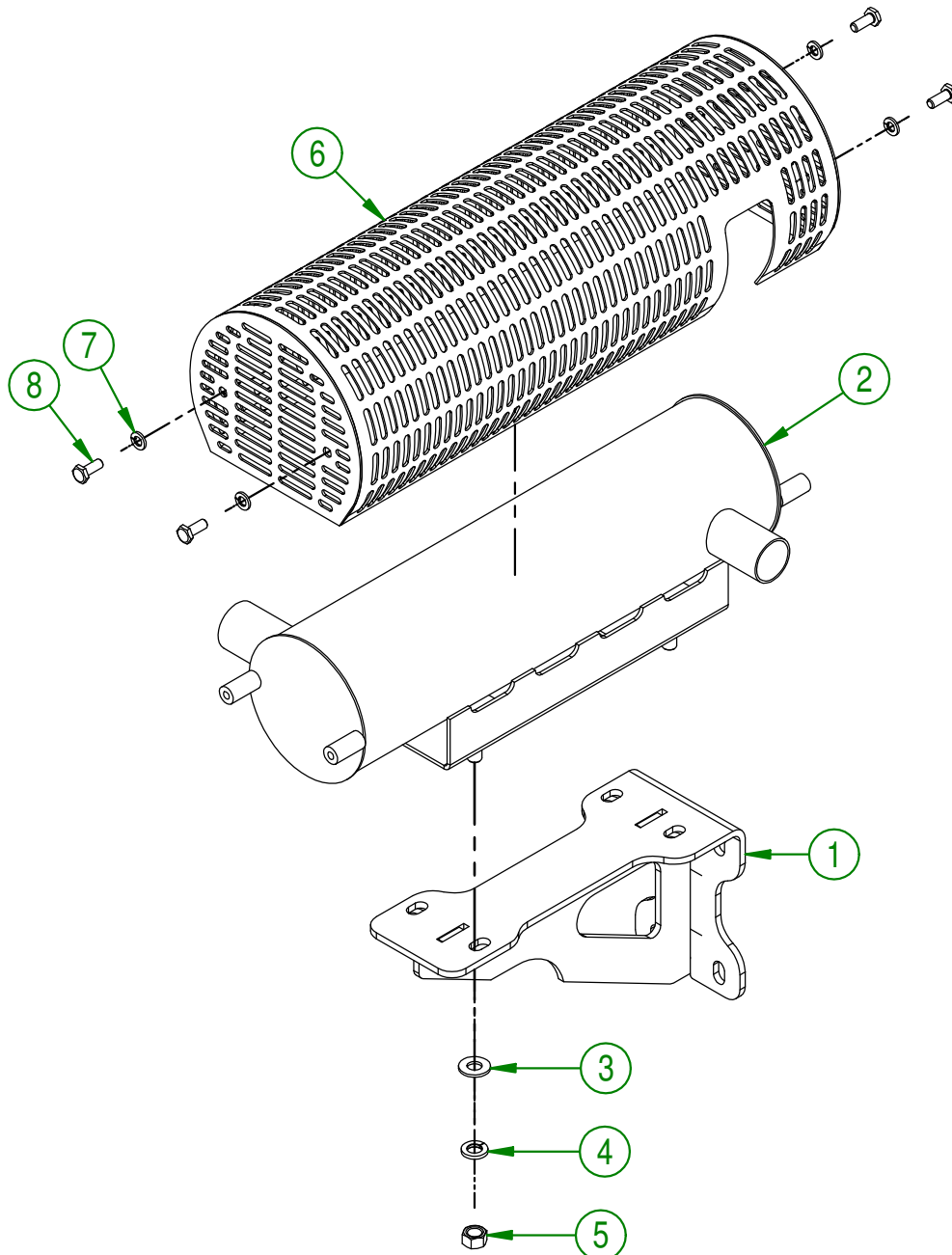
AGRIMETAL	
TURBINE "BOLT INCLUDED"	
CREATION : 11/10/18	ASSEMBLY : 33-57-0080
REVISION : 13/09/21	AUTHOR : J.KABWE

#	PART #	Qty	TITLE
1	NC01-96-0009	2	NYLON-INSERT LOCKNUT ZINC 1/4-20
2	NC01-04-0027	2	CARR. BOLT 1/4-20 X 6" LG
3	NC01-04-0056	2	CARR. BOLT 5/16-18 X3/4"
4	33-01-3015	1	BATTERY STRAPE
5	NC02-32-0011	2	LOCK WASHER ZINC 5/16"
6	NC13-12-0001	1	12 VOLTS BATTERY
7	NC02-07-0017	2	HEX. NUT 5/16-18
8	NC13-80-0267	1	RED PROTECTOR FOR BATTERY POST
9	NC13-80-0268	1	BLACK PROTECTOR FOR BATTERY POST
10	33-01-4000	1	HOUR METER HOLDER
11	NC13-37-0669	1	HOUR METER



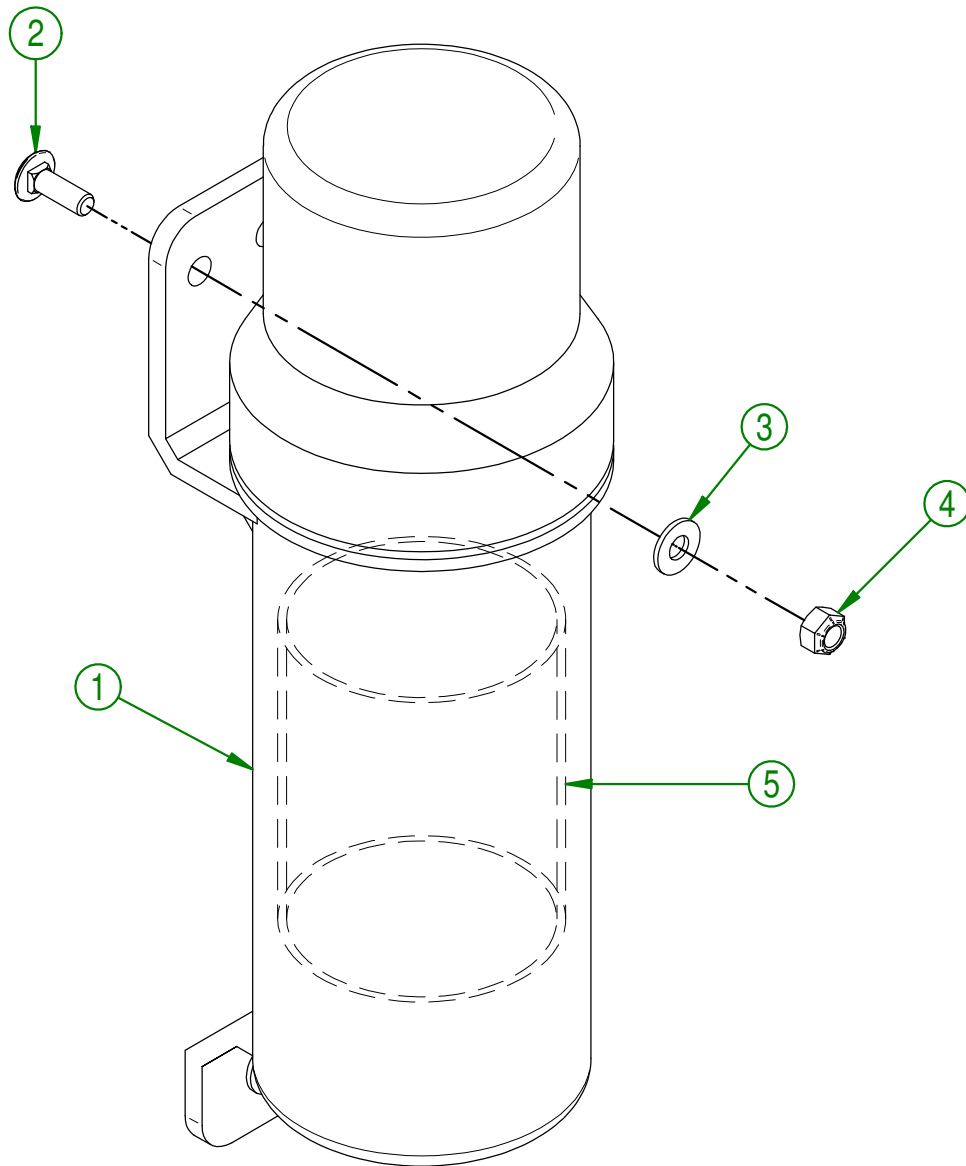
AGRIMETAL	
12 VOLTS BATTERY GROUP.	
CREATION : 31/10/17	ASSEMBLY : 33-57-0055
REVISION : 01/09/21	AUTHOR : J.KABWE

#	PART #	Qty	TITLE
1	22-50-0300	1	MUFFLER SUPPORT (KOHLER 27 HP)
2	33-50-1050	1	27 HP KOHLER MUFFLER
3	01-01-2485	4	FLAT WASHER
4	NC02-32-0012	4	LOCK WASHER ZINC 3/8"
5	NC02-07-0018	4	HEX. NUT ZINC 3/8-16
6	33-50-1055	1	MUFFLER GUARD (27 HP KOHLER)
7	NC02-32-0010	4	LOCK WASHER ZINC 1/4"
8	NC01-29-0003	4	HEX. BOLT GR5 ZINC 1/4-28 X 5/8"



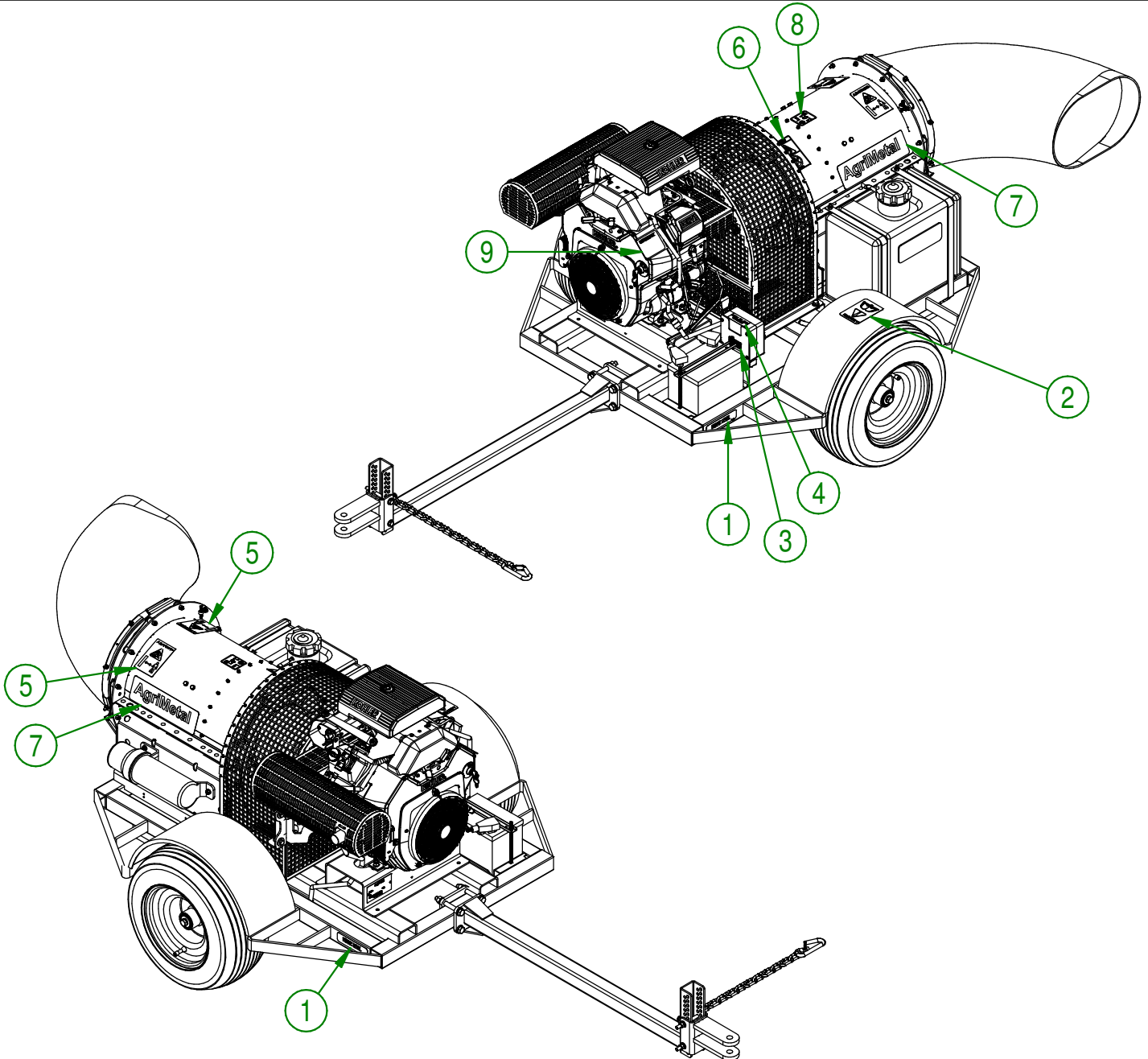
AGRIMETAL	
MUFFLER SUPPORT & MUFFLER ASSY.	
CREATION : 01/11/17	ASSEMBLY : 33-55-0075
REVISION : 08/01/18	AUTHOR : J.KABWE Page 16 de 18

#	PART #	Qty	TITLE
1	NCI3-30-0237	1	PLASTIC TUBE FOR OPERATOR'S MANUAL
2	NC01-04-0003	3	CARR. BOLT GR2 ZINC 1/4-20 X 3/4"
3	NC02-25-0007	3	WASHER ZINC 0.281 = 9/32
4	NC01-96-0009	3	NYLON-INSERT LOCKNUT ZINC 1/4-20
5	33-98-0621	1	OPERATION MANUAL TB 270



AGRIMETAL	
OPERATOR MANUEL TUBE ASSEMBLY	
CREATION : 14/02/18	ASSEMBLY : 33-57-2566
REVISION : 05/10/18	AUTHOR : J.KABWE Page 17 de 18

#	PART #	Qty	TITLE
1	NCI3-33-0052	2	STICKER FRAME LEVEL
2	NCI3-33-0183	1	STICKER CAUTION OPERATION MANUAL
3	NCI3-33-0251	1	STICKER TO PROGRAM REMOTE CONTROL
4	NCI3-33-0227	1	STICKER FUSE 15 AMP MAXIMUM
5	NCI3-33-0192	2	STICKER (PROJECTION RISK)
6	NCI3-33-0185	1	STICKER PICTOGRAM (FIRE + CIGARETTE)
7	NCI3-33-0035	2	STICKER AGRIMETAL
8	NCI3-33-0129	1	STICKER 101 DB
9	NCI3-33-0178	1	STICKER IMPORTANT PLEASE CHECK OIL LEVEL...



AGRIMETAL
TURBINE BLOWER 270

CREATION : 06/11/17
REVISION : 13/09/21

ASSEMBLY : **33-99-2501**
AUTHOR : J.KABWE